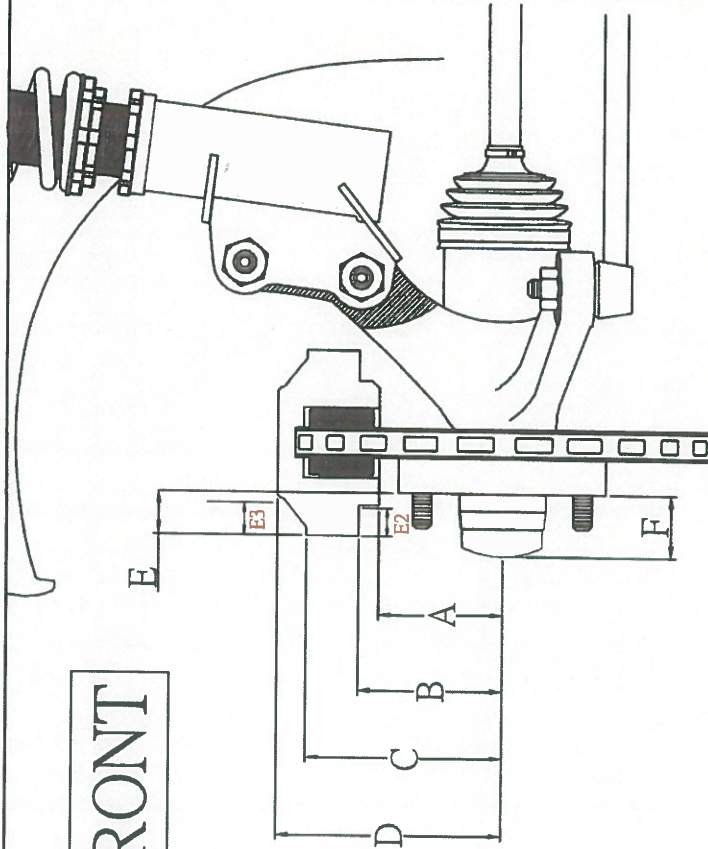


FRONT



- A. Distance between Hub center point to bottom edge of caliper. A. 59 mm
- B. Distance between Hub center point to near edge of outward face of caliper. B. 62 mm
- C. Distance between Hub center point to far end edge of outward face of caliper. C. 110 mm
- D. Distance between Hub center point to the top edge of caliper. D. 145 mm
- E. The distance of caliper over the hub mounting surface. E. 35 mm

TYPICALLY OPPOSING PISTON CALIPER ONLY

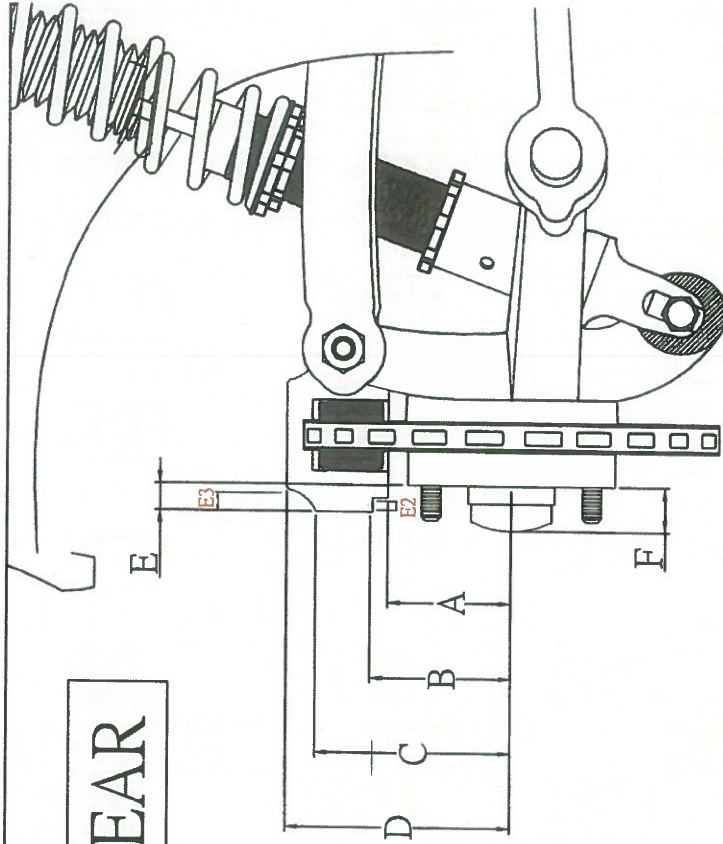
E2. The distance of the recess from the face of the caliper. (inner) E2.        mm

TYPICALLY OPPOSING PISTON CALIPER ONLY

E3. The distance of the recess from the face of the caliper. (outer) E3.        mmF. Protrusion of drive shaft over hub mounting surface. F. N/A mm

OEM = 18 X 9

REAR



- A. Distance between Hub center point to bottom edge of caliper. A. 112 mm
- B. Distance between Hub center point to near edge of outward face of caliper. B. 130 mm
- C. Distance between Hub center point to far end edge of outward face of caliper. C. 155 mm
- D. Distance between Hub center point to the top edge of caliper. D. 194 mm
- E. The distance of caliper over the hub mounting surface. E. 45 mm

TYPICALLY OPPOSING PISTON CALIPER ONLY

E2. The distance of the recess from the face of the caliper. (inner) E2.        mm

TYPICALLY OPPOSING PISTON CALIPER ONLY

E3. The distance of the recess from the face of the caliper. (outer) E3.        mmF. Protrusion of drive shaft over hub mounting surface. F. 45 mm

OEM = 18 X 9.5